

Southend Bach Choir

Presents

Mozart

Mass in C Minor K. 427

Clarinet Concerto in A Major

Soloist: *William Knight*

with the

The Essex Concert Orchestra

Saturday 21st April 2018

7:30 pm

St Michael & All Angels' Church

Leigh Road, Leigh-on-Sea



Programme



The Southend Bach Choir

Musical Director - Colin Edwards

The Southend Bach Choir began life in 1943 as an evening class of the Municipal College in Southend under the direction of its founder Dr. Harold May, FRCO. Known as the Municipal College Choir it gave its first performance in December of that year. The programme consisted of selections from Handel's Messiah.

In its early years the Municipal College Choral and Orchestral Society sponsored the birth of the College Opera Group, which became independent in 1950. In this year the choir's name reverted to "The Municipal College Choral Society" and many challenging concerts followed.

In 1968 the choir became the Southend Bach Choir, and in 1993 under the baton of Gerald Bates, (Musical Director 1987-2001) the Choir celebrated its Golden Jubilee with a memorable performance of Bach's B Minor Mass. Upon Gerry's retirement in 2001 the choir welcomed its present Musical Director Colin Edwards.

TODAY

The Southend Bach Choir is a very happy and friendly group of people singing a wide range of music. We meet for rehearsal every Tuesday evening in school term time at:

***Blenheim Primary School
Blenheim Chase, Leigh on Sea***

Rehearsals commence at 7.30pm with a break for coffee and conversation and finish at 9.30pm. Each week we receive professional training from our Musical Director, learning new works and preparing for our performances.

Have you ever thought you would like to join a Choir but have never taken it any further?

Why wait, why not give it a try?

THE SOUTHEND BACH CHOIR WELCOMES NEW MEMBERS

Singing in a Choir is a great hobby. It is not only very enjoyable, but you make new friends, and have the opportunity of learning to sing wonderful music not only in rehearsals but at regular Concerts which the public attend.

For further information please contact:

Ian Alston (Chair) on 01702 589209

or visit our website:

www.southendbachchoir.org.uk

In Memory of Pam Wall : 1932 - 2018

It is appropriate that this concert is dedicated to the memory of Pam Wall, who died in February of this year. Throughout her life Pam had been closely associated with Southend Bach Choir, from the early days of its existence as the Municipal College Choral Society, an evening class of the old Municipal College, which she joined as a 15 year old teenager in 1948. Pam took on the role of contralto soloist at many of our earlier concerts with her main works being The Messiah, St. Matthew Passion and The Dream of Gerontius. When Pam's health deteriorated and she was unable to continue singing with us she became, together with her husband John, a Patron of the choir. The choir owes her a great deal and her presence will be greatly missed.

In Memory of Elizabeth (Lizza) Hodgkins : 1940 - 2018

We are also dedicating this concert to the memory of Lizza who died last week. Lizza was a committed, enthusiastic member of the choir for many years and held the post of Chair from 1997 - 2002. Unfortunately, due to ill health over the past few years, she had to give up singing with the choir. Her humour and larger than life character has been greatly missed.

Programme

Ave Verum Corpus - Motet KV 618

Wolfgang Amadeus Mozart
(arr. Malcolm Hiscock)

Clarinet Concerto in A Major

Wolfgang Amadeus Mozart
Soloist: William Knight

INTERVAL

Mass in C Minor K. 427

Wolfgang Amadeus Mozart
Edited by: H.C.R. Landon

Please join the choir for light refreshments during the interval.

Our Guest Soloists



William Knight (*Clarinet*) - Born in Essex and educated at Westcliff High School for Boys, William Knight began learning the clarinet under the tutelage of local teacher, Gill Thorn. Having been a member of the National Children's Orchestras and the National Youth Orchestra, he went on to study at the Royal College of Music in London under Richard Hosford, Timothy Lines and Michael Collins, supported by a John Nickson scholarship award. He graduated in 2017 having won the RCM Clarinet Prize and the Stephen Trier award for

Bass Clarinet and having performed under conductors such as Bernard Haitink, Vladimir Jurowski and John Wilson. Since graduating, he has gone on to forge the beginnings of a successful career as an orchestral clarinetist and has performed with orchestras such as the Royal Northern Sinfonia, the Royal Scottish National Orchestra, the City of Birmingham Symphony Orchestra and the BBC Symphony Orchestra. He has recently performed concertos in Essex and Suffolk and is delighted to be back in Southend to perform the Mozart Concerto.



Elizabeth Dunlop (*Soprano*) - began her vocal training with Margaret Cozens and went on to study Singing with Neil Mackie and Piano with Yonty Solomon at the Royal College of Music, where she was the recipient of both French and Italian languages prizes. In 1987 she was the winner of the Freda Parry Scholarship, which enabled her to study Bel Canto and Coloratura operatic repertoire with Italian Opera singer, Graziella Sciutti.

Elizabeth performs regularly as a concert soloist, as well as being one half of local soprano duo, 'The Two Elizabeths', with Elizabeth Upsher. A respected Singing and Piano teacher for over 28 years, she also teaches class music at Thorpedene Primary School. Elizabeth also enjoys conducting and has directed adult and children's choirs, delivered choral workshops and was for 8 years assistant MD and soloist for 'The Orpheus Singers' ladies' choir. More recently Elizabeth has been engaged as Musical Director for the Southend Operatic and Dramatic Society's productions at the Palace Theatre, Westcliff – 'Carousel' and 'Sweeney Todd' in 2015, 'Hello Dolly' in 2016 and in November 2017 'Singin' in the Rain'.

Elizabeth is delighted to be performing with the Southend Bach Choir this evening.

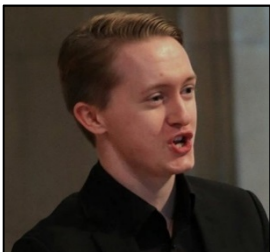


Alexandra Haider (*Soprano*) - Alexandra graduated from the Colchester Institute with BA Hons in music and singing in 1999. There she was principal soprano with the Early music group under the directorship of Peter Holman.

Since graduating as well as teaching as a peripatetic music teacher for Essex County Council, and teaching privately, she has had numerous vocal engagements including English National Opera in their specially commissioned opera 'For the

Public Good' by Orlando Gough at the Coliseum. Her other opera roles include Pamina in the Magic Flute, Mercedes in Carmen and Solange in Offenbach's 'Not in front of the waiter'.

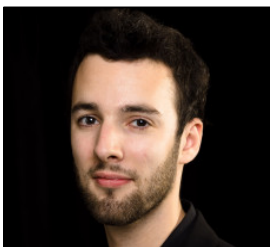
She was principal soprano soloist at the 70th birthday concert of the prolific English composer, Howard Blake OBE. She also performs regularly with the 'Pastores ensemble'.



Sam Jewison (Tenor) - Praised as a 'fully rounded musician' (Next BRIT Thing), Sam Jewison is a vocalist, pianist and conductor, based in London. He holds a BMus (first-class honours) from Trinity Laban Conservatoire of Music and Dance and was awarded the TCM Trust Silver Medal for Voice. He continues under Lynton Atkinson and Anna Tilbrook on the MMus course (Kathleen Creed Scholar).

Sam represented Trinity Laban at the Kathleen Ferrier Bursary 2014 giving a 'Highly Commended' performance. Subsequently, he was a finalist in the TL English Song and Elisabeth Schumann Lieder competitions. Recent roles include: Idomeneo (Idomeneo/TLScenes), Hippolyte (Hippolyte et Aricie/TL Scenes), Eisenstein (Die Fledermaus/PuzzlePiece Opera) and Jephtha (Stephen Jackson/Brandenburg Choral Festival), in addition to creating Beauclerc in Louis Mander's The Rue Morgue (OperaUpClose/King's Place) and Apollo in Matthew Hall's Cantata. In 2015, Sam was the tenor soloist in the British premiere of Bingham's A Bird is Singing at the BASCA British Composer Awards, held at the BFI Southbank and broadcast on BBC Radio 3. Recently, he performed Der Arme Peter and Liederkreis (Op. 24) in the TL Schumann Series, prepared by Eugene Asti.

An avid chamber musician, Sam regularly accompanies singers and instrumentalists, including a longstanding partnership with violinist Rosie Judge, recently performing at the Foreign & Commonwealth Office. In 2016, he conducted the Sam Jewison Orchestra's debut, The Cole Porter Story, at Blackheath Halls. This sell-out performance was followed by appearances at South Kensington's Polish Hearth Club, Westminster Abbey and the Jazz Café, the latter celebrating the music of Frank Sinatra.



Samuel Mitchell (Baritone) - a London-based Baritone, currently completing his postgraduate studies at Trinity Laban Conservatoire of Music & Dance as the Kathleen Roberts scholar under the tutelage of Alison Wells.

He was previously educated at Oundle School where he held a Music scholarship, and Manchester University where he read Music and performed regularly as a pianist and singer, becoming heavily involved in ensembles across the city. He held lay clerkships at Truro, Ely and Christchurch Cathedrals, performs regularly at the Tower of London and St Paul's Cathedral, and has joined many leading ensembles such as The Sixteen, Siglo de Oro, The Erebus Ensemble and Britten Sinfonia Voices.

Equally at home as a soloist, Sam's repertoire includes Brahms, Fauré, Mozart and Durufle Requiems, Handel Messiah and Saul, Bach St Matthew Passion, St John Passion and Christmas Oratorio, Schubert's Winterreise and Vaughan Williams' Five Mystical Songs.

On the operatic stage he has performed an impressive variety of scenes including extracts from the roles of Figaro, Rigoletto, and Prospero in Ades' *The Tempest* (Manchester University Opera Scenes), Vicar/ Budd in Britten's *Albert Herring*, Harlequin in Strauss' *Ariadne auf Naxos*, Thésée in Rameau's *Hippolyte et Aricie* and Raleigh/ Mountjoy in Britten *Gloriana* (Trinity Laban). Full stage roles include Cadmus in Handel's *Semele*, Seneca in Monteverdi's *L'incoronazione di Poppea*, and Aeneas in Purcell's *Dido and Aeneas*.

Sam is a member of the acclaimed group the Gesualdo Six, directed by Owain Park. The group were St John's Smith Square Young Artists 2015-2016, can be heard regularly on BBC Radio 3, and are due to release their first recording of English renaissance polyphony in spring 2018.

Our Accompanist

Roger Humphrey - studied Organ, Piano, and conducting at the Royal College of Music, where he gained a degree of Bachelor of Music and was awarded his master of Arts degree at City of London University in 1993. He has held positions of Director of Music at Southend School for Boys, and lecturer in Performing Arts at South East Essex College. Roger is conductor of the Southend Choral Society, Director of Music at Holy Trinity Church, Southchurch, and accompanist to the Southend Bach Choir. He is also founder of the Southend Girls Choir, and a Director of the Southend Summer School for Performing Arts. Roger was appointed Director of the Southend Boys Choir in 1996 by the Southend Borough Council. In January 2000 Roger was elected a Fellow of the Royal Society of Arts for services to Music and the Arts.

THE ESSEX CONCERT ORCHESTRA

Director: Malcolm Hiscock

Information: 01268 743069 / 01702 207912 / 07958 193390

Email: boxoffice@essexconcertorchestra.org.uk

Web: www.essexconcertorchestra.org.uk

The Essex Concert Orchestra is a not-for-profit organisation whose objective is to bring varied orchestral music to a wider audience in an endearing and informative manner, whilst providing talented individuals with the opportunity to study and perform repertoire outside the confines of professional musicianship. It is also seen as a high calibre semi-professional orchestral body, which is available for hire or commissioning at relatively low cost by charities, trusts or other musical organisations. The Orchestra's total membership includes some eighty top musicians from the Essex area. These individuals include professional performers, students at prominent London and Essex music colleges, and music teachers. The Orchestra is a member of the Southend-on-Sea Arts Council and acknowledges the support given by Making Music (formerly known as The National Federation of Music Societies).

The Southend Bach Choir would like to thank the following retail outlets for their support in advertising our concert tonight:

Anke's Coffee Lounge, Westcliff-on-Sea

Ashbys Butchers, Southchurch

Broadway Fruits, Thorpe Bay

Christchurch Fundraising Shop, Southend-on-Sea

CLU Hair Salon, Rayleigh

Costa Coffee, Thorpe Bay

Eliza's Boutique, Westcliff-on-Sea

Hair By Stylecut, Shoeburyness

Health-Spa Water, Westcliff-on-Sea

Home Made Bakery, Thorpe Bay

Jerry Bell Hairdressing, Leigh-on-Sea

La Pizzeria, Westcliff-on-Sea

Pavarotti Italian Restaurant, Westcliff-on-Sea

Rakelas Hair Beauty, Westcliff-on-Sea

Stage Hair Studio, Westcliff-on-Sea

Southend Christian Bookshop, Southend-on-Sea

Woodfield Newsagents, Hadleigh

Woodgrange Hair & Beauty, Thorpe Bay

The choir thank Hair & Son for printing the programmes for this concert.



OUR PATRONS

Mrs J. Bishop-Laggett Mrs J. Restorick

Mr S.C. Burford Mr. T. Harding

Mr. J. Wall

*Southend Bach Choir is very grateful to the Patrons
for their continued encouragement and support*

For details of the Patron Scheme:

Phone: Eileen - 01702 714672

Email: Andrew - nahannah13@gmail.com

OUR NEXT CONCERT

Summer Concert

Saturday 14th July 2018 at 7.30pm

Trinity Methodist Church, Westcliff on Sea

SAVE THE DATE

CAROL SERVICE IN AID OF HARP

Southend's Homeless Charity

Saturday, 15th December 2018

For further information please
visit our website:

www.southendbachchoir.org.uk



Southend Bach Choir
Registered Charity No. 274370