



1914-1918
**CENTENARY
REMEMBRANCE CONCERT**



IN SUPPORT OF
**HELP *for*
HEROES**

Participating Groups:
Eastwood Chorale
Southend Bach Choir
Southend Choral Society
Southend Festival Chorus
Southend Symphony Orchestra
and Southend Boys' and Girls' Choir

NOVEMBER 2018

Southend Choirs Join Forces

In order to commemorate the centenary of the end of the First World War, 4 local adult choirs - Eastwood Chorale, The Southend Bach Choir, The Southend Choral Society and The Southend Festival Chorus have joined forces for this significant occasion. In today's Concert of Remembrance they have been joined by The Southend Symphony Orchestra and The Southend Boys' and Girls' Choirs, forming a chorus of over 250 voices from some of Southend's keenest choral singers.

Planning for the concert began over 2 years ago, and the repertoire chosen between the choirs includes choral and orchestral music particularly relevant to 1914 - 1918, with Elgar's "Music Makers" forming the centre piece of the first part of today's concert, and include works by George Butterworth, John Williams, Sibelius, Parry, Holst and some traditional uplifting WW1 songs performed by The Southend Boys' and Girls' Choirs.

This afternoon's performance is conducted by Grace Rossiter, who was appointed Deputy Conductor of the BBC Symphony Chorus in 2017.

We welcome Help for Heroes today at the concert. This charity does valuable work to support those who return home from war injured, whether in mind or body. Representatives will be in the foyer as you leave the concert today to accept donations to support their work.

Do take some time today to view the exhibitions of photographs, poppies and a selection of the memory cards which were left at the 14-18 NOW Poppies: Wave exhibition at Shoebury Barge Pier last year.

Today's choirs are happy to welcome new singers. Look on the websites for details of our future concerts and for our rehearsal information. You are welcome to contact any of us for further information:-

The Committee, Eastwood Chorale
Ian Alston, Chair, Southend Bach Choir
Heather Crisp, Chair, Southend Choral Society
Vanda Roberts, Chair, Southend Festival Chorus

Remembrance



Before the 19th century news of military deaths 'over there', wherever that may have been, was often received weeks, months and in some cases a year after the event. This may have contributed to the fact that wars tended to be remembered only in such things as street names, squares and even palaces.

The 19th Century and particularly the late 19th Century saw, with the introduction of the electric telegraph and the increase in newspaper readership, a greater awareness of the horrors of war, made more vivid with the addition of photographs. Memorials now appeared in churches and cathedrals to the dead of wars in such places as South Africa and the North west frontier of India.

However, it was the horrors of the Great War, with the enormous loss of life brought so vividly home by the cinema newsreels as well as the newspapers and other publications that saw Remembrance becoming so much a part of the nation's fabric.

Remembrance Day (Poppy Day, Armistice Day) has been the chief memorial day of Great Britain and the Commonwealth since World War I and was officially dedicated by King George V in 1919. Since then a 2 minute silence has been kept on the 11th November although the main observance has taken place on the 2nd Sunday of November at the Cenotaph. The Royal British Legion is the nation's custodian of Remembrance and the poppy has become the symbol of remembrance.

Today at 11.00am marked the 100 years since the Armistice or end of hostilities between the Great Powers of World War I. Officially the war only came to an end with the signing of the various Paris Peace Treaties, most notably Versailles, which took place over the next few years.

David Milne



Southend Symphony Orchestra

Musical Director – Matthew Andrews



Southend Symphony Orchestra was formed as an association in 1921 from the orchestral section of the Westcliff Operatic and Dramatic Society. The aims of the Orchestra were “to perform, for the benefit of members and friends, the works of The Great Masters as created in Overtures, Symphonies and Concertos for solo instruments”. There were few opportunities at this time to hear such works outside London, other than as performed by Military Bands.

Under the baton of Myles Hook the Orchestra took off and a high standard was achieved, and in 1936 we became affiliated to the National Federation of Music Societies.

The Orchestra continued under several different conductors until the outbreak of the Second World War, and was revived in 1946. To help attract new post-war members several notable soloists were engaged including Eric Harrison, Trefor Jones and Philip Hattey. The Orchestra rapidly gained the respect of its audiences. Since the war there have been a number of notable conductors at the helm including John Bates, Christopher Adey, Michael Hamm, Ray Maulkin, Antoine Mitchell and Jean-Louis Gosselin whose enthusiasm and commitment have been of great benefit to the Orchestra.

Matthew Andrews is now our permanent conductor and we look forward to a new era with Southend Symphony remaining the premier Orchestra in Southend.

The Orchestra was presented on a number of occasions by the Southend Music Club including performances of Tchaikovsky's Piano Concerto No. 1 with Philip Fowke, Mahler's 3rd symphony when we were joined by Essex Symphony Orchestra, the Claire Singers, Fidelio Singers and Southend Boys' Choir, and Rachmaninov's Piano Concerto No.2 with Artur Pizarro. In 1980 Nigel Kennedy played the Bruch Violin Concerto at the Cliffs Pavilion. The Orchestra has also linked up with the Leigh Orpheus Male Voice Choir and Sweyne Choral Society for performances of Cherubini's Requiem, Vaughan Williams' Sea Symphony and many other works.

We give three concerts a year usually in October, March and June. New members are always welcome. We rehearse at Highlands Methodist Church on Wednesdays at 7.30. Further information is available on our website:

www.southendsymphony.com

Eastwood Choral

Musical Director – Ian Walker

The Choral is a friendly group of singers who meet at 8.00pm most Wednesday evenings at The Eastwood Community Centre, in Western Approaches, Eastwood, (next door to Morrison's supermarket.) We perform a variety of music ranging from Bach to Bacharach, Sibelius to Sondheim, Gilbert & Sullivan to Abba and Queen. We perform about 4 concerts a year with the aim of bringing a broad range of musical entertainment to our audiences and members. Whether you have sung before or not The Choral would like to extend a warm welcome to anyone who would like to give choral singing a try. We are looking for folk who might enjoy singing with an enthusiastic group of similarly minded people. All we ask is that you give it a meaningful try and ask for help which existing members are happy to give where requested. Over the last few years we have seen our numbers grow but we are always happy to see more. The Choral is a registered charity and holds fund raising events which are well supported by our membership, their families and friends and are a good way for our members to socialise which all adds to the pleasure of producing good music.

What's on next?

On Wednesday 19th December we will be performing a traditional Christmas concert at the Eastwood Community



Centre, at the above address. It's always a very well subscribed event. Our spring concert will be held on Saturday 11th May 2019 at Westcliff High School for Boys. We will be performing songs and music from popular West End Musicals which is invariably the favourite of members and audiences alike.

If you would like to learn more about the choir and its activities, please have a look at our website, or contact Carolyn, tel: 07585 330823 / 01702 347102 email: carolynbrooks638@yahoo.com Registered Charity no 1033315

<http://eastwoodchorale.wixsite.com/sing>

Southend Boys' and Girls' Choirs

Presidents - Bob Chilcott and Jonathan Willcocks, CBE

Patron - Raymond Gubbay, CBE

Musical Director - Roger Humphrey

Accompanist - Rosemary Pennington



The Southend Boys' and Girls' Choirs consist of over 140 singers, aged 8 - 21 from across Southend and the South East of Essex, UK. The choirs regularly perform in London's major concert venues, including St Martin in the Fields, Cadogan Hall, St James Piccadilly, Royal Festival Hall and Royal Albert Hall. In addition they frequently appear at corporate events, including prestigious London hotels, Claridges and Jumeriah Carlton Towers Hotels, and Hampton Court Palace. They have performed on national TV and radio stations, in addition to making recordings and CDs.

The choirs have performed at the BBC Proms Series on several occasions, in 2015 they performed "Carmina Burana" at the Royal Albert Hall with the BBC Concert Orchestra and BBC Symphony Chorus and last year they took part in the BBC Ten Pieces Proms concerts. This year, just the day before the choirs embarked on the tour to Australia and Hong Kong, 102 singers took part in a performance of Mahler's Symphony No 8 (Symphony of a Thousand) at the Royal Albert Hall, a performance which was broadcast live on BBC Radio 3.

The singers often perform with London based opera companies and orchestras, and past engagements have included Britten's "Owen

Wingrave", "La Boheme" and "Cunning Little Vixen" with British Youth Opera.

Every year the Southend Boys' Choir perform "Carmina Burana" with the Royal Philharmonic Orchestra at the Royal Albert Hall, and both choirs perform widely across London concert venues during the Christmas season.

The choirs make regular concert tours both to Europe and US, Canada, Australia and Singapore. In recent years they have performed in the Sydney Opera House, Queensland Performing Arts Centre, and Cathedrals in Florence, Paris, Belgium, Barcelona, Milan, Monaco and Nice. Recent tours to US have included singing in Washington, Chicago, Cleveland, NY, Boston and Philadelphia.

In 2015 they performed in Rome in a European concert tour, singing Mass in St Peter's Basilica and concerts in The Pantheon and the Cathedral of St Agipta, where composer Palestrina was organist, and in 2016 the choirs performed in Toronto, Ottawa, Montreal and Quebec. Last year the choirs performed Mass at St Mark's Basilica, Venice and concerts in major churches in Lake Garda and Verona.

www.southendchoirs.org.uk

Southend Bach Choir

Musical Director - Colin Edwards



Southend Bach Choir began life in 1943 as an evening class of the Municipal College in Southend under the direction of its founder Dr Harold May, FRCO. Known as the Municipal College Choir it gave its first performance in December 1943 in a programme that consisted of selections from Handel's Messiah. In its early years the Municipal College Choral and Orchestral Society sponsored the birth of the College Opera Group, which became independent in 1950. In this year the choir's name reverted to "The Municipal College Choral Society" and many challenging concerts followed singing major works in Southend and further afield.

In 1960 the choir became the Southend Bach Choir, and in 1993, under the direction of Gerald Bates, celebrated its Golden Jubilee with a memorable performance of Bach's Mass in B Minor. In 2001 the Choir welcomed its present Musical Director Colin Edwards, as he returned to his home town after many years in the North West, where he was Music Adviser and Head of Music Services for the Local Education Authority.

The choir performs 4 concerts each year singing a range of music including choral classics from Bach, Mozart, Haydn & Brahms, contemporary composers such as Chilcott, Rutter & Lloyd Webber, to more light-hearted music for our summer and Christmas concerts. We also take our music into the local community whenever possible and we raise money for local charities such as the RNLI, Essex Wildlife Trust and local homes. Last year we performed a special Carol Concert in aid of Southend's Homeless Charity HARP and are pleased that we will be supporting HARP again for our Christmas Concert on 22nd December 2018.

The Southend Bach Choir is a very happy and friendly group of people singing a wide range of music. We meet for rehearsal at Blenheim School every Tuesday evening in school term at 7:30 pm. New members are always welcome.

For further information please contact our Hon. Secretary on 01268 772842 or via our web site at:

www.southendbachchoir.org.uk

Southend Festival Chorus

Musical Director - Dr. Joseph Fort



The Southend Festival Chorus was formed in 1969 by Dr. Roy Wales and is a vibrant community based choir.

It has built a reputation for outstanding performances under a succession of distinguished musical directors, including Lionel Friend, Michael Crabb MBE, Tom Appleton and Robbie Jacobs. Over the years, the Chorus has performed at several prestigious venues, including engagements with leading orchestras. Past performances have included Brahms' Requiem, Vaughan Williams' Sea Symphony, Beethoven's Ninth Symphony, Elgar's Dream of Gerontius and Walton's Belshazzar's Feast (all with the New Queens Hall Orchestra). Handel's Messiah (Roy Goodman and the English Chamber Orchestra) and Mahler's Symphony No 2 (Gilbert Kaplan and the Royal Philharmonic Orchestra).

More recently we have varied our repertoire to include lesser known works such as John Corigliano's Fern Hill, choral anthems by Purcell, George Shearing's Songs and Sonnets from Shakespeare and a new Requiem by Christopher Wood. The Choir also travels abroad and has sung in Rouen Cathedral and Fecamp Abbey in Normandy and Ypres Cathedral as well as Ripon Cathedral in the North of England.



In January of this year we welcomed our new Musical Director, Dr. Joseph Fort who has led us in successful performances of Rossini's Messe Solennelle, John Rutter's Birthday Madrigals and Vaughan William's Five Mystical Songs.

The Chorus always welcomes new members and anyone interested in joining should contact the Membership secretary Georgina Davies on 01268 777541 or email her, via our contact page on,

www.southendfestivalchorus.org.uk



Southend Choral Society was established in 1943. The founder and conductor for twenty nine years was Madam Freda Parry OBE. Through her inspiration the Society achieved a very high standard of performance. Since 1983 Roger Humphrey has been the choir's Musical Director with Rosemary Pennington as accompanist. The choir has grown from strength to strength and the musical achievements have been many.

The Diamond Anniversary of the foundation of the Choral Society in 2003 was marked with the Choral Society joining forces with the Southend Festival Chorus and the Southend Boys' and Girls' choirs in a Choral Spectacular. The following year saw another combined concert with the Southend Festival Chorus and Southend Bach Choir performing Berlioz's *Grande Messe des Morts*.

In March 2009 we again teamed up with Southend Festival Chorus, the Southend Bach Choir and the Southend Concert Orchestra to perform Verdi's *Requiem* in the Bernadine Hall with Sir David Willcocks conducting. In November 2012 we performed *The Armed Man* with Brian Kay conducting with Southend Bach Choir, Southend Festival Chorus and Southend Boys' and Girls' Choirs at the Cliffs Pavilion.

2013 was the 70th Anniversary of the formation of our choir and we celebrated this with a visit to Abbeville and Rouen in May joining with The Albert Laurent d'Abbeville choir. In October of this year a group from the choir visited Worthing and sang in Alfriston Church. Also in 2013, we performed 'Selkie'

by Roderick Williams and Carl Orff's 'Carmina Burana'.

The choir has made several visits abroad. The choir has visited and sung in the Seychelles, France, Belgium and Holland. In October 2011 the choir visited Bruges & Ghent to perform in Ghent Cathedral and in Ypres Cathedral. In 2015, the choir again visited Boulogne to join with Lyriade and the Albert Laurent choirs to perform the *Campra Requiem* at the Centre Brassens.

In October 2017 the choir visited Boulogne for a very successful weekend of singing with our French friends.

The Choral Society performs four concerts each year usually in April, June/July, November and December. The summer concert is usually light-hearted and the December one being, of course, a very popular Carol Concert. The Spring and Autumn concerts often include the Southend Concert Orchestra.

Our next concert is Christmas concert at Kings Road United Reformed Church. 8th December 7.30pm with The Tilbury Band and Our Lady of Lourdes School Choir

The Society is always pleased to welcome new members. Rehearsals are held every Thursday 7.45 to 9.45pm at Prince Avenue Primary School, Hornby Avenue, Westcliff-on-Sea. If you are interested in joining us, please contact: Heather Crisp 01702 465460.

Programme

The National Anthem.....	arr. Benjamin Britten
Turn Back O Man.....	Gustav Holst
Finlandia Op 26.....	Jean Sibelius
Nimrod from Enigma Variations Op.36.....	Sir Edward Elgar
The Music Makers Op.69.....	Sir Edward Elgar words by Arthur O'Shaughnessy

I N T E R V A L

I was glad when they said unto me.....	Sir C. Hubert H Parry
Distant Land (A Prayer for Freedom).....	John Rutter
Hymn to the Fallen.....	John Williams
Allelujah.....	Randall Thompson
On the Banks of Green Willow.....	George Butterworth
Everyone Sang.....	Brian Knowles
In Flanders Fields.....	Brian Knowles
WW1 Medley.....	Arr. Gerald Usher
Jerusalem.....	Sir C. Hubert H. Parry
Pomp and Circumstance March Op.39 No.1.....	Sir Edward Elgar

Battle's Over - A Nation's Tribute

The Cenotaph, Southend Cliff Gardens, Clifftown Parade.
*The Cenotaph is five minutes walk from the Cliffs Pavilion,
to watch these moving events*

Today the United Kingdom and its friends overseas will mark the day 100 years ago when the guns fell silent at the end of the First World War.

This is a national celebration to commemorate this date, with events taking place across the country.

In Southend we are recognising this event at the Cenotaph, Southend Cliff Gardens, Clifftown Parade.

In the foyer you can see part of "Fields of Battle Lands of Peace 14-18" photographer Michael St Maur Sheil. The full exhibition can be seen at the Beecroft Gallery, Victoria Avenue, Southend on Sea.

06:00 Battle's Over - Sleep in Peace

Pipers across the country performed the Scottish Lament, "Battle's O'er". This was performed at the Cenotaph this morning.

18:55 The Last Post

The Last Post will be performed by buglers up and down the country. The Last Post will be performed at the Cenotaph after this concert.

19:00 Beacons of Light

A large beacon will be lit at the cenotaph at this time, in line with beacons across the country.

19:05 Ringing out for Peace

Churches across the country are being encouraged to ring their bells at this time to commemorate the moment of peace across the world.



Jerusalem

And did those feet in ancient time
Walk upon England's mountain green?
And was the holy Lamb of God
On England's pleasant pastures seen?
And did the countenance divine
Shine forth upon our clouded hills?
And was Jerusalem builded here
Among those dark satanic mills?

Bring me my bow of burning gold!
Bring me my arrows of desire!
Bring me my spear! O clouds, unfold!
Bring me my chariot of fire!
I will not cease from mental fight,
Nor shall my sword sleep in my hand,
Till we have built Jerusalem
In England's green and pleasant land.

Land of Hope and Glory

Land of Hope and Glory, Mother of the Free,
How shall we extol thee, who are born of thee?
Wider still and wider shall thy bounds be set;
God, who made thee mighty,
make thee mightier yet,
God, who made thee mighty,
make thee mightier yet.

Programme Notes

Sir Edward Elgar (1857-1934) The Music Makers (1912)

This work for soloist, chorus and orchestra, was commissioned for the Birmingham Music Festival, and first performed there in 1912. The music is in praise of the creative artist- the music maker. It includes a number of motifs from other works by Elgar, including the Dream of Gerontius, the 1st Symphony and the famous Nimrod theme from the Enigma Variations, which is played at the Cenotaph memorial service every year.

The National Anthem (arranged by Benjamin Britten (1913-1976))

This arrangement for chorus and orchestra of the National Anthem begins in reflective mood and builds to the pageantry that we usually associate with the anthem. It was arranged by Lord Britten for the Leeds Festival in 1961.

Randall Thompson (1899-1984) Alleluia (1940)

This work, which was originally for unaccompanied chorus, is a very well-known work in the United States. It was composed and first performed at the opening of the Berkshire Music Centre in Tanglewood, USA, in 1940. Thompson chose to compose a largely quiet and peaceful work, to voice his concern about the war in Europe.

Sir Charles Hubert Hastings Parry (1848-1918) I Was Glad (1902)

This psalm text has been set by composers for the coronation of the British monarchy over many centuries. The most famous version by Parry was composed for the coronation of King Edward VII, and heard in all subsequent coronations, and many royal weddings. Although the work has a brief quiet interlude, it is otherwise a strident composition of pomp and circumstance.

John Williams (1932-) The Hymn to the Fallen

The Hymn to the Fallen anthem for chorus and orchestra was composed as the main theme to the film- Saving Private Ryan (1998)- and directed by Steven Spielberg. The noble theme mirrors the sacrifices made during the Battle of Normandy in 1944. The theme has often been used in military memorial ceremonies.

Gustav Holst (1874-1934) Turn Back O Man (1916)

This setting by Holst of the 'Old 124th' hymnal, to words by Clifford Bax, is a plea for peace written during the conflict of World War One.

John Rutter (1945-) Distant Land (1990)

This anthem for chorus and orchestra was composed in 1990 to mark the fall of the Berlin Wall and the release from prison of Nelson Mandela. The words are the composer's own, and look forward to an age of freedom from war and other conflict. Distant Land is frequently used as an anthem in military funerals; particularly in the USA.

Jean Sibelius (1865-1957) Be Still My Soul (from Finlandia (1899))

Regarded as Finland's greatest composer, this work by Sibelius was first performed in 1899 as a call for Finnish independence from the then Russian empire. Words were added some years later, and the song is one of the most important to Finnish national identity. This arrangement is in the English hymnal version.

Brian Knowles (1946-) Everyone Sang

Everyone Sang is a setting for chorus and orchestra of the poem by Siegfried Sassoon. The poem was written in 1919, in response to the armistice declared to mark the end of World War One.

George Butterworth (1885-1916) The Banks of Green Willow

The music of George Butterworth has become synonymous with the vision of Britain- and specifically southern England- shattered by the First World War. The famous orchestral work- The Banks of Green Willow was composed in 1913, and premiered in 1914. Two years later, Butterworth was killed at the Battle of the Somme.

Sir Edward Elgar (1857-1934) The Variations on an Original Theme

The Variations on an Original Theme (usually known as the Enigma Variations) was composed between 1898 and 1899, and first performed in 1899; quickly establishing Elgar's international reputation as a composer. The variations are musical portraits of Elgar's wife and friends. Variation IX- the Nimrod variation- is a stately adagio which is played every year at the Cenotaph memorial on Remembrance Sunday.

The Music Makers

Arthur O'Shaughnessy

We are the music makers,
And we are the dreamers of dreams,
Wandering by lone sea-breakers,
And sitting by desolate streams;
World-losers and world-forsakers,
On whom the pale moon gleams:
Yet we are the movers and shakers
Of the world for ever, it seems.

With wonderful deathless ditties
We build up the world's great cities,
And out of a fabulous story
We fashion an empire's glory:
One man with a dream, at pleasure,
Shall go forth and conquer a crown;
And three with a new song's measure
Can trample a kingdom down.

We, in the ages lying
In the buried past of the earth
Built Nineveh with our sighing,
And Babel itself in our mirth;
And o'erthrew them with prophesying
To the old of the new world's worth
For each age is a dream that is dying,
Or one that is coming to birth.

A breath of our inspiration
Is the life of each generation
A wondrous thing of our dreaming
Unearthly, impossible seeming...
The soldier, the king, and the peasant
Are working together in one,
Till our dream shall become their present,
And their work in the world be done.

They had no vision amazing
Of the goodly house they are raising;
They had no divine foreshowing
Of the land to which they are going:
But on one man's soul it hath broken,
A light that doth not depart;
And his look, or a word he hath spoken,
Wrought flame in another man's heart.

And therefore to-day is thrilling
With a past day's late fulfilling;
And the multitudes are enlisted
In the faith that their fathers resisted,
And, scorning the dream of to-morrow,
Are bringing to pass, as they may,
In the world, for its joy or its sorrow,
The dream that was scorned yesterday.

But we, with our dreaming and singing,
Ceaseless and sorrowless we!
The glory about us clinging
Of the glorious futures we see,
Our souls with high music ringing;
O men! It must ever be
That we dwell in our dreaming and singing,
A little apart from ye.

For we are afar with the dawning
And the suns that are not yet high,
And out of the infinite morning
Intrepid you hear us cry ...
How, spite of your human scorning,
Once more God's future draws nigh,
And already goes forth the warning
That ye of the past must die.

Great hail! we cry to the comers
From the dazzling unknown shore;
Bring us hither your sun and your summers;
And renew our world as of yore;
You shall teach us your song's new numbers,
And things that we dreamed not before:
Yea, in spite of a dreamer who slumbers,
And a singer who sings no more.

Grace Rossiter

Conductor

Born in London, Grace is a choral conductor, composer and arranger. A champion of youth music, Grace has been Musical Director of the Finchley Children's Music Group since 2001. FCMG regularly works with leading international orchestras, and she has prepared the choir for conductors including Martyn Brabbins, Marin Alsop, Mark Wigglesworth, Kurt Masur, Richard Hickox, Sir Colin Davis, and Alexander Vedernikov.

In addition to their concert performances, her work with FCMG includes large-scale events such as singing with Madonna at Wembley for Live Earth, as well as staged productions with the National Theatre, Shakespeare's Globe, English National Opera and Rambert Dance Company. Grace conducted the London première of Michael Finnissy's children's opera Mankind for the London Contemporary Music Festival and the world première of Malcolm Singer's The Jailer's Tale at the artsdepot, with subsequent concert performances at Menuhin Hall and London's Southbank. She has also premièred choral works by James Weeks, John Pickard and Richard Sisson, and Terry Mann's score for Common Dance (Rosemary Lee/ Dance Umbrella) with the group. Celebrating their 60th anniversary year, FCMG will be performing newly commissioned works by Alastair Putt and Alexander L'Estrange at the Queen Elizabeth Hall next January.

Grace gave the première of Kerry Andrew's No Place Like, conducting the Ten Pieces Children's Choir at the BBC Proms in 2017. She is Director of the BBC Proms Youth Choir Academy, and recently conducted the BBC Singers in a recording of new works written by 2017's BBC Proms Inspire winners. She is also closely associated with the Sing Up! scheme, recording repertoire for their Song Bank since its launch in 2007 as part of the government's national singing programme.

Grace is Deputy Chorus Director of the BBC Symphony Chorus, Musical Director of Finchley Choral Society and has worked with Crouch End Festival Chorus and Brighton Festival Chorus as a vocal coach and chorus master. She has been a guest conductor with the BBC Singers for whom she has also arranged a number of popular works for BBC Music Day and BBC's Children In Need. She premièred The Elements, a large-scale choral work written together with her husband, Stephen Jeffes, for the BBC Singers and the massed voices of Harrow Schools at the Roundhouse.



Elizabeth Dunlop

Soloist

Elizabeth Dunlop – began her vocal training with Margaret Cozens and went on to study Singing with Neil Mackie and Piano with Yonty Solomon at the Royal College of Music, where she was the recipient of both French and Italian languages prizes. In 1987 she was the winner of the Freda Parry Scholarship, which enabled her to study Bel Canto and Coloratura operatic repertoire with Italian Opera singer, Graziella Sciutti.

Elizabeth performs regularly as a concert soloist in recital and oratorio, as well as being one half of singing duo, 'The Two Elizabeths', with soprano Elizabeth Upsher. A respected Singing and Piano teacher, she has also taught music in Primary Schools.

An avid conductor, Elizabeth has directed adult and children's choirs, delivered choral workshops and was for eight years assistant MD and soloist for 'The Orpheus Singers' ladies' choir, which made her their first honorary life member.

Engagements as Musical Director for the Southend Operatic and Dramatic Society's productions at the Palace Theatre, Westcliff have included 'Carousel' and 'Sweeney Todd' in 2015, 'Hello Dolly' in 2016 and in November 2017 'Singin' in the Rain'.

In September 2018, Elizabeth commenced studying for an MA in Music Therapy at the Guildhall School of Music and Drama, where she is the grateful recipient of a scholarship from the Harry Weinrebe Award.

Elizabeth is delighted to be performing this afternoon in this special Remembrance concert.



Forthcoming Events

Southend Symphony Orchestra

2/3/19

An evening of music to celebrate the life of Lorraine Kelly, with a retiring collection in aid of Havens Hospices

Salvation Army Temple, Hadleigh 7:30pm

8/6/19

Summer Concert

Salvation Army Temple, Hadleigh

Grieg Piano Concerto and Sibelius Symphony No. 5.

Southend Bach Choir

22/12/2018

NINE LESSONS & CAROLS – In aid of HARP

St. Mary's Church, Prittlewell, SS2 6LQ 7pm

Admission free – all donations exclusively to HARP

13/4/2019

SPRING CONCERT Dixit Dominus – Handel

St Augustine's Church, Thorpe Bay, SS1 3JH

7:30 pm

Further Information from 01268 772842

www.southendbachchoir.org.uk

Southend Choral Society

8/12/18

Christmas Concert

Kings Road United Reformed Church 7:30pm

with The Tilbury Brass Band and Our Lady of

Lourdes school choir.

27/4/19

Spring Concert

Kings Road United Reformed Church 7:30pm

Faure's Cantique de Jean Racine & Durufles Requiem

13/7/19

Summer Concert - A Night at The Musicals

The Plaza Centre 7:30pm

Southend Boys' and Girls' Choirs

7/12/18

Ceremony of Carols

St Augustine's Church, Thorpe Bay - 8pm

21/12/18

A Christmas Carol

Kings Road U.R. Church - 8pm

Tickets from 01702 465460

Eastwood Chorale

19/12/18

Traditional Christmas Concert

Eastwood Community Centre 8pm

4/5/19

West End Musicals

St Nicholas Church, Rawreth

11/5/19

West End Musicals

Westcliff High School for Boys 7:45pm

5/10/19

Westcliff High School for Boys 7:45pm

Southend Festival Chorus

2/12/2018

Christmas Favourites

St Michael and All Angels, Leigh SS9 1LF 3pm

30/3/2019

Bernstein's Chichester Psalms

and Walton's The Twelve.

Venue: not confirmed 7:30pm

29/6/2019

Mozart's Solemn Vespers and Vivaldi's Gloria.

St Michaels and All Angels, Leigh SS9 1LF 7:30pm

30/11/2019

Britten, Finzi and Vaughan Williams.

Kings Road United Reform Church, Crowstone

Road, Westcliff, SS0 8LH 7:30pm

7/12/2019

Scratch Messiah.

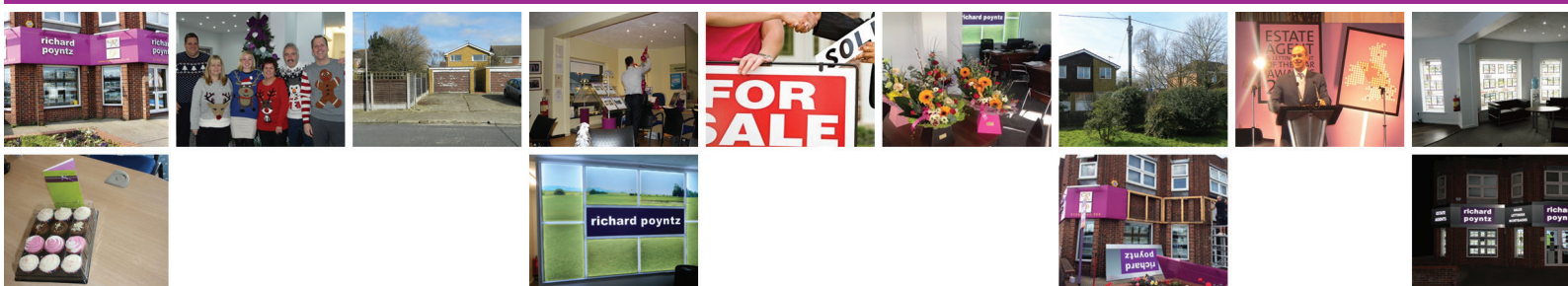
Kings Road United Reform

Church, Crowstone Road, Westcliff, SS0 8LH

7:30pm

richard poyntz

01268 699599



Richard Poyntz F.N.A.E.A

richard
poyntz

53

Celebrating 50 years as
an estate agent
1965 - 2018



Where can you turn for financial advice?

At Joseph Lamb we have more than 48 years' experience providing honest, effective investment and pension advice.

View the performance of our portfolios and our client testimonials at josephlamb.co.uk

For a **FREE** consultation or a simple, informal discussion about your investment or pension concerns, call **01268 749880**.

We are proud to be supporting
HELP for HEROES

- ▲ Investment Management
- ▲ Inheritance Tax Planning
- ▲ Investing For Growth + Income
- ▲ Financial Protection
- ▲ Drawing + Building Pensions
- ▲ Redundancy Counselling
- ▲ Equity Release
- ▲ Business Protection

More than 48 years of experience in wealth management, investment advice and inheritance tax planning.

Joseph lamb is the trading style of Joseph R. Lamb Independent Financial Advisers Ltd – Chillingstone House, 26 Eastwood Road, Rayleigh, Essex SS6 7JQ. Past performance is no guarantee of future returns. The value of investments can fall as well as rise. Joseph R Lamb IFA Ltd are authorised and regulated by the Financial Conduct Authority.



A R Lee & Co

CHARTERED CERTIFIED ACCOUNTANTS



**BUSINESS START-UP • COMPLIANCE SERVICES
CONSULTANCY & SYSTEMS ADVICE • TAXATION
INVESTMENTS & PENSIONS • SUPPORT SERVICES**

A R Lee & Co is a firm of Chartered Certified Accountants based in Southend-on-Sea, Essex offering accounts, taxation and business advisory and support services to a wide range of businesses and individuals.

At A R Lee & Co we provide a cost-effective, high value solution to meet all of your financial needs. We work hard to get to know you in order to deliver timely, individual advice on how to improve your business and personal wealth.

**To find out how
we can help you and your business**

Tel: 01702 333204

email: [office@arlee.co.u](mailto:office@arlee.co.uk)

www.arlee.co.uk

LBH | Insurance

***where
service
counts***

0800 652 5551 | www.lbhinsurance.co.uk

***For personal service talk to our professional
experienced advisers to arrange your home,
travel motor and business insurances***

LBH | Insurance
660-662 London Road
Westcliff on Sea SS0 9HL

Authorised and regulated by the Financial Conduct Authority

getting you back up to speed



Repair & Support

- ◇ Windows 7
- ◇ Windows 8
- ◇ Windows 10
- ◇ iPhone, iPad
- ◇ Apple Mac

Upgrades and Solutions

- ◇ Cloud backup services
- ◇ Home Security & CCTV
- ◇ Connected Home device sales & setup
- ◇ IT Tuition
- ◇ Home & Office Networks
- ◇ Office 365 setup & migration services

Telephone: 01702 306701

Web: www.johnsonit.net

JOHNSON



repair. upgrade.
train. support

THPThe Hudson Partnership
Chartered Accountants

Solutions, Tailored Your Way

The Hudson Partnership, accountants in Eastwood Leigh on Sea, providing a personal service at a cost effective price to suit any size of business.

*Free
Consultation**Fixed Quote**Increased
Profits*

call us today on 01702 520042
or email info@thehudsonpartnership.co.uk
www.thehudsonpartnership.co.uk

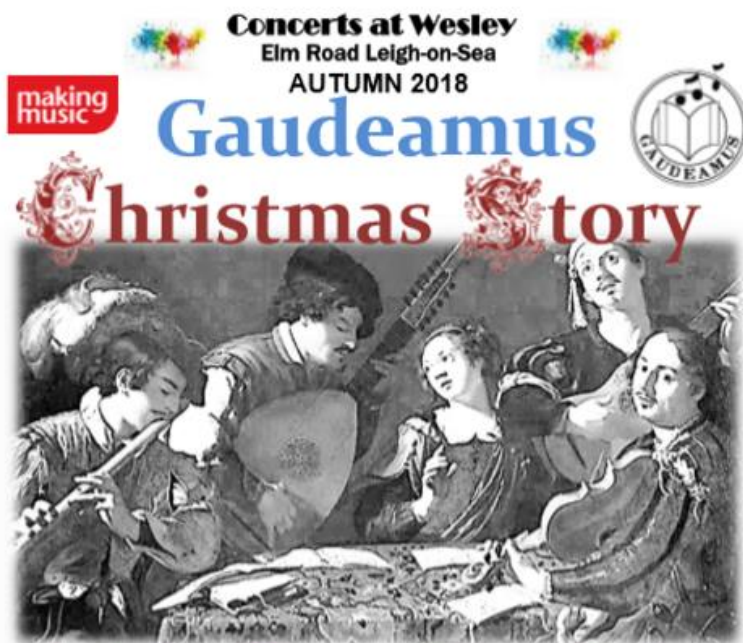
Geoff Keane

CARPETS LTD

All types of flooring **supplied & fitted**

**CARPETS
KARNDEAN
RUGS
LAMINATE AND VINYL**

213 Woodgrange Drive
Southend on Sea
Essex
SS1 2SG

01702 613773geoffkeanecarpets@btconnect.comwww.geoffkeanecarpets.co.uk

A selection of Baroque Christmas Music

Schutz- Christmas Story
Charpentier- In Nativitatem Jesu Christi
Purcell- Behold I bring you glad tidings
Scheidt- In dulci jubilo

Wesley Methodist Church,
Elm Road Leigh-on-Sea, SS9 1SJ
Saturday 1st December 2018 @ 7.30pm,
tickets are £15

For further information, contact Dennis Hamilton
on 01268 773336 or go to www.gaudeamuschoir.co.uk
Twitter and Facebook- @GaudeamusEssex

**DEDMAN
GRAY**www.dedmangray.co.uk

All Under One Roof

Expertise At Dedman Gray

Please speak to a member of our team to find out how Dedman Gray can assist you with all your property needs.

- Residential Sales
- Residential Lettings
- Commercial Sales
- Commercial Lettings
- New Homes Sales
- Land & Development
- Business Sales
- Auctions

Residential – 01702 311042 Commercial – 01702 311111

Auction Sales – 01702 311010 Business Sales – 01702 311037

www.dedmangray.co.uk

Concert Series 2018

PLAZA CENTRE, SOUTHCHURCH ROAD

Friday 16th November, 8pm

JOHN LILL - Piano

Haydn, Brahms, Schumann, Beethoven

Tickets £10 (£8 Concert Club Members)

Friday 18th January 2019, 8pm

Tenebrae Consort

"Sun, Moon, Sea and Stars"

Music by Lassus, Bennett, Gibbons,
Chilcott, Cole Porter, Gershwin

Tickets £10 (£8 Concert Club Members)

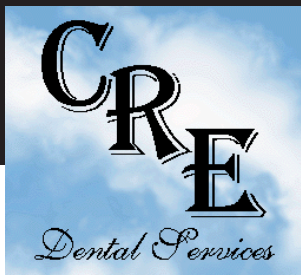
Choral Workshop directed by
Nigel Short on the day, 1pm - 2.30pm

Tickets and Concert Membership:

Tel: 01702 215624

www.southend.gov.uk/concerts

www.southend.gov.uk/choral



CRE Dental Services

DENTISTS

Are you looking to refurbish your dental practice
or create a new one from scratch?

Perhaps you require a Decons room or even a complete make-over.

Whatever your requirements C R E Dental Services can provide.

We are a well established friendly, professional company
with 32 years of experience and can provide references
from many satisfied customers.

Call us on **01206 231991** or **info@credentalservices.co.uk**



Acknowledgements

The Concert of Remembrance organising committee would like to thank the following people and organisations for their assistance

Southend-on-Sea Arts Council
Olympus KeyMed (Keymed)
Waitrose Supermarket
Martin Lamb – Joseph Lamb Associates
Richard Hair & Son
Elaine Fisher - Design Confidence
Gerald Usher
Southend Museum - Christopher Langdon
Southend Borough Council
Fields of Battle Lands of Peace 14-18 - Photographer Michael St Maur Sheil
Musical Directors of the participating music groups:
Colin Edwards – Southend Bach Choir
Roger Humphrey – Southend Choral Society
Dr. Joseph Fort – Southend Festival Chorus
Ian Walker – Eastwood Chorale
Matthew Andrews – Southend Symphony Orchestra
Tracy Spurgeon
Helen Durell
PDS Digital

Making Music

Stow Maries Great War Aerodrome

In the foyer you can see part of “Fields of Battle Lands of Peace 14-18” photographer Michael St Maur Sheil. The full exhibition can be seen at the Beecroft Gallery, Victoria Avenue, Southend on Sea.

Eastwood Chorale Registered Charity No: 1033315
Southend Choirs UK Registered Charity No: 118040
Southend Bach Choir Registered Charity No: 274370
Southend Choral Society Registered Charity No: 277214
Southend Festival Chorus Registered Charity No: 284725
Southend Symphony Orchestra Registered Charity No: 261264